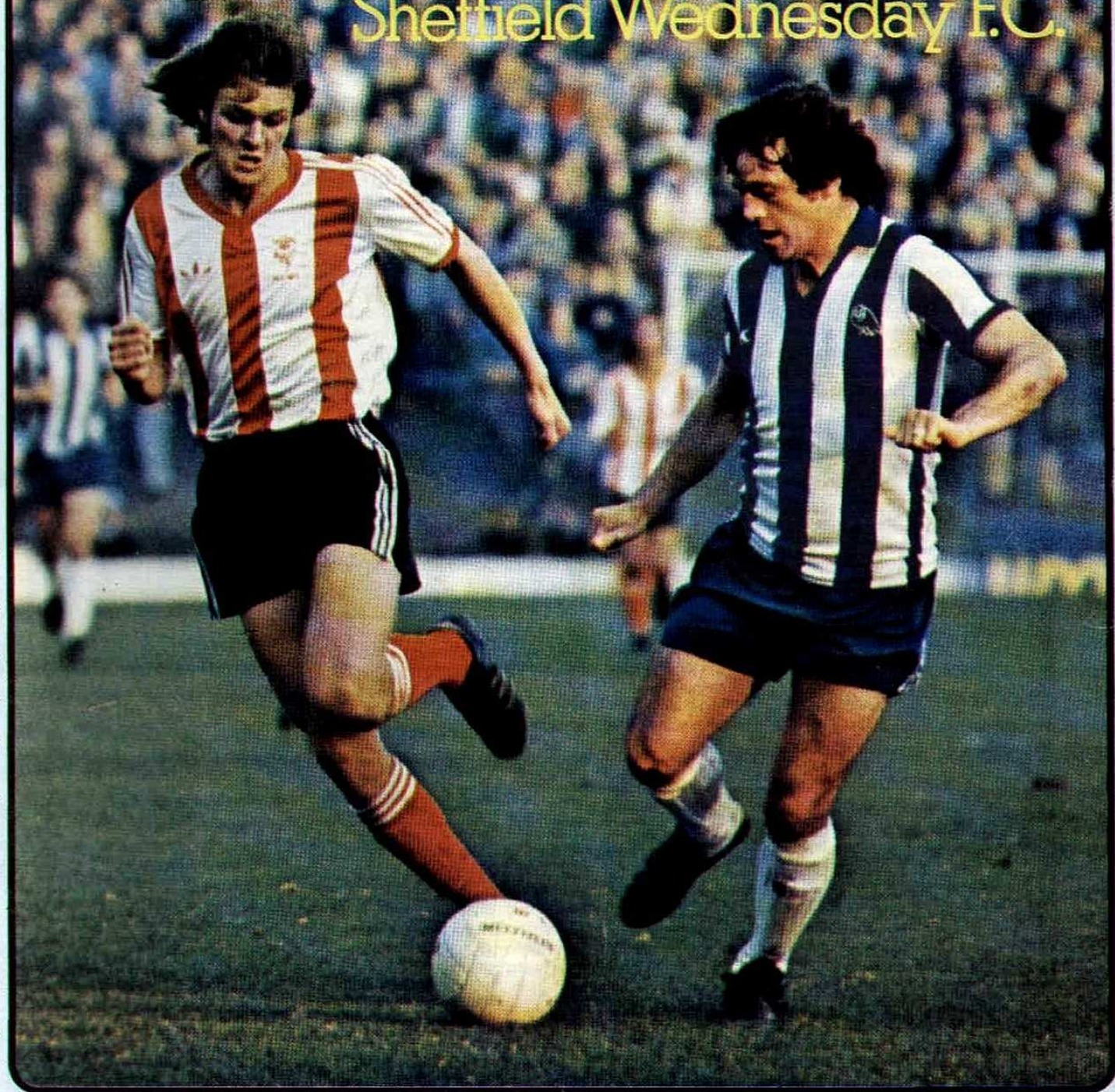


THE OWL

Sheffield Wednesday F.C.



FOOTBALL LEAGUE DIVISION THREE, FRIDAY, 11th MAY, 1979, at 7.30 p.m.

Swindon Town F.C.

DIVISION THREE PROGRAMME OF THE YEAR 1979, VOL. 5, No. 25. PRICE 20p.



The best morning of your life.

Only one morning newspaper
gives you all the news that matters
about **Wednesday** and the sports news
that matters from all over the country
and all over world....



MORNING TELEGRAPH



SHEFFIELD WEDNESDAY FOOTBALL CLUB
Hillsborough, Sheffield S6 1SW

President:

The Rt. Hon. The Lord Netherthorpe, LL.D.

Vice-Presidents:

Sir Andrew Stephen, M.B., Ch.B.
Mr. S. Ashton, Mr. A. Broomhead
Mr. R. R. Gunstone, Mr. C. Turner

Directors:

Mr. H. E. McGee (Chairman)
Mr. M. Sheppard, J.P., F.C.A. (Vice-Chairman)
Mr. R. Whitehead, Mr. S. L. Speight, O.B.E.
Mr. C. Woodward, Mr. K. T. Addy, Mr. E. Barron

Manager: Jack Charlton, O.B.E.

Secretary: Eric England

Commercial Manager: Dennis Woodhead

Hon. Medical Officer: Dr. W. Purcell, M.B., Ch.B.

Telephone Numbers at Hillsborough

Club: 343123, Box Office: 343122

Development Office: 337235

Lottery Results: 349906

Supporters Club Office: 333419

Open Monday and Friday 6.30 p.m.-7.30 p.m.
Match days 1.30 p.m. and after the game—Members only.

Club Honours

Division 1 Champions: 1902-03, 1903-04,
1928-29, 1929-30. *Runners-up:* 1960-61

Division 2 Champions: 1899-1900, 1925-26,
1951-52, 1955-56, 1958-59. *Runners-up:* 1949-50

F.A. Cup Winners: 1896, 1907, 1935
Runners-up: 1890, 1966

Magazine Production Team

Editor: Jon Culley (*Morning Telegraph*)

Photographs: Steve Ellis

Printed by: J. W. Northend Ltd., Sheffield

The views expressed by the individual contributors are not
necessarily the views of Sheffield Wednesday F.C. Ltd.

© Sheffield Wednesday F.C.

Charlton



The middle of May is not usually the busiest time for a football manager, but I find myself in for a hectic weekend. Tonight's match with Swindon promises to be anything but an end-of-season affair, with our visitors chasing promotion even at this late stage, and tomorrow I am asked to give my views on TV during the Cup Final.

As I said, the season is far from over for Swindon, who can still win the Third Division title. They are sure to be out for points today, so we will have to be on form to make sure they do not have things their own way.

I'm still looking for a good, 90-minute performance from the lads. We did reasonably well in patches against Watford last weekend when we were beaten, but I was not as pleased with Monday's performance against Rotherham, even though we won. There are areas in which we have to

improve considerably, although there have been pleasing points. It was nice to see Ian Fleming getting on the score-sheet for one. Ian has had a lousy start to his career here. Had it not been for his injury he would be an established member of the side now, but he has showed tremendous spirit in his fight for fitness and,

though he was not 100 per cent on Monday, he gave us a few examples of the ability he has, which was the reason I bought him. Given the summer to get himself right, I am sure he will prove himself a good investment next season. The thing that did disturb me greatly on Monday was the barracking some sections of the crowd gave Bob Bolder. That kind of personal attack on a player is cruel and pointless, and can only be of damage to the club. If Bob loses confidence as a result I will pin

the blame entirely on the people on the terraces responsible for the attacks. For the sake of Sheffield Wednesday, the treatment Bob was subjected to on Monday must not happen again. Bob is in the side because I chose him. If anyone doesn't agree with my decision then it is me they should be jeering, not Bob.

On a happier note, I'll add my congratulations to my old Leeds colleague Allan Clarke on getting promotion from the Fourth in his first season as manager at Barnsley.

I look forward to meeting him here next season. At the same time, I have to commiserate with our neighbours at Bramall Lane. Much as the prospect of Derby matches makes the mouth water, it is sad to see both Sheffield clubs playing at this level. Let's hope we can do something to improve the situation next season.



The Third

Jon Culley of the Morning Telegraph takes a topical look at the Third Division and a closer look at today's visitors...

SWINDON TOWN F.C.

Soccer fans in this area may grumble at the lack of top-class action on view in this area these days, but the Third Division next season promises, at least, to provide the keenest competition we have seen at local level for years. With Barnsley promoted from the Fourth and Sheffield United relegated from the Second, the Third will contain no fewer than six sides from Sheffield and the surrounding area—as well as Hull City and Grimsby from not much further afield.

So it may be true that, between the Tees and the Trent on this side of the Pennines, we have only one team—Leeds—playing in the higher divisions, but I, for one, am looking forward to the intriguing fixtures next season's Third Division programme will provide.

There will be, incredibly, 30 matches which could be described as local derbies—and uppermost in the mind, obviously, is the prospect of the first Wednesday v United match in the League for nine seasons.

The last time the Owls met the Blades in League competition was during the 1970-71 Second Division season, the year United were last promoted to the First, and the year after Wednesday were relegated.

The details of the two meetings that season are: At Bramall Lane, 3rd October, 1970. United 3, Wednesday 2. Attendance: 39,983.

Teams—United: Hodgkinson, Badger, Hemsley, Powell, Colquhoun, Barlow, Woodward, Reece (Tudor), Dearden, Currie, Salmons. Wednesday: Grummitt, Thompson, Young (Pugh), Todd, Ellis, Craig, Sinclair, Prendergast, Downes, Warboys,

Sissons. Scorers—United: Colquhoun, Dearden, Tudor. Wednesday: Craig, Sinclair.

At Hillsborough, 12th April, 1971. Wednesday 0, United 0. Attendance: 47,592.

Teams—Wednesday: Grummitt, Rodrigues, Burton, Ellis, Prophett, Pugh, Sinclair, Craig, Sunley, Prendergast, Sissons. United: Hope, Badger, Hemsley, Flynn, Colquhoun, Hockey, Woodward, Ford (Salmons), Dearden, Currie, Reece.

The most staggering details are in attendances. Not unusual then, of course, but unthinkable these days.

The aggregate crowd for the two games totalled 87,575—and the Hillsborough attendance was more than 24,000 higher than the next best for the season, against Leicester, who went on to win the Second Division title.

A season in the Third may not look very attractive, but at least the clubs in this area can anticipate plenty of cash at the turnstiles. The Wednesday-United matches are likely to produce the biggest crowds in the Division, and judging by the 21,000 who watched their midweek win over Grimsby, Barnsley can be expected to bring a big following when they come to Sheffield.

Returning to the present, this season's Third Division honours are still undecided. The championship could still go any of four ways—with Swindon and Shrewsbury both with a chance of overtaking Watford and Swansea at the top, while Gillingham are still capable of winning promotion.

At the other end, the issues are decided.

Peterborough could manage only a point at home to Chesterfield in midweek, which means Mansfield, barring mathematical miracles, stay up, and Peterborough go down with Walsall, Tranmere and Lincoln. Blackburn and Millwall join us with Sheffield United from Division Two, while Reading and (probably) Wimbledon accompany Barnsley and Grimsby from Division Four.

... AND TODAY'S VISITORS

Swindon come to Hillsborough incredibly on Cup Final eve, still looking for points in the promotion race. After Tuesday's important win at Brentford, the Wiltshire club need three points from their last two matches to guarantee promotion, although superior goal difference would likely ensure a place in the top three with two points more.

And so tight is the top of this section that four points would give Swindon a point more than Watford and Swansea—and therefore the title. Promotion would be a personal triumph for manager Bobby Smith, the former Port Vale and Bury boss who was appointed a year ago next Friday, and of course for ex-Owls boss Danny Williams, general manager.

Swindon were last at Hillsborough on the opening day of last season, when Tommy Tynan scored a second-half equaliser to give Wednesday a share of the points after Chris Kamara had given the Wiltshire club the lead. Goalkeeper **Jimmy Allan** joined Swindon from Scottish part-timers Brora Rovers in 1970, and though he made his League debut shortly after turning professional in 1971, did not become a first-team regular until 1976-77. On the way to 200 League appearances.

After failing to make the first team at Bournemouth, defender **Andy Ford** moved on to Southend, where he became an established first team player, before moving to Swindon at the start of the 1977-78 season.

Sheffield-born **Ray McHale** served long stints at Chesterfield and Halifax before joining Swindon in April, 1978. Operates principally in midfield, but is dangerous moving forward.

Steve Aizlewood, who has Welsh Under-23 caps, started with his home club, Newport County, in 1969, and stayed there until Swindon signed him in March, 1976.

London-born **Ken Stroud** has been with Swindon all his footballing career, and is among the club's longest-serving current players. He enjoys playing in midfield or as central defender.

A name familiar in this area is **Ian Miller**, the Scot who became a big favourite at Doncaster Rovers. Once on Nottingham Forest's books, Ian, a winger of the old school, was signed by Swindon during the close season.

Cornishman **Roy Carter**, who started out with non-League Falmouth as a part-timer, was snapped up by Hereford in 1975, and stayed there two and a half years before signing for Swindon in December, 1977.

Phil 'Chic' Bates, born in West Bromwich, spent seven years in Southern League soccer before Shrewsbury signed him in 1974. Joined Swindon just over a year ago.

Joint-costliest signing this season has been striker **Andy Rowland**, who was signed from

Bobby Smith's old club Bury for £80,000 last September. Had been leading scorer at Gigg Lane for the previous two seasons.

Middlesbrough-born **Chris Kamara** broke into League football with Portsmouth in September, 1975. The south coast club reluctantly sold him to Swindon in the summer of 1977, when they were under a cloud financially. An attacking midfielder player who regularly scores goals. £80,000 was also the fee Swindon paid to Watford for **Alan Mayes** in February. Makes up for lack of inches with a natural ability to score goals, and celebrated his debut with a hat-trick at Rotherham, where Swindon won 3-1. Northern Ireland international **Bryan Hamilton** did much to contribute to Ipswich's success in the early 70's, and was a member of their triumphant UEFA Cup side. Left Ipswich for Millwall in July, 1977, and joined Swindon last November.



Flashback: Swindon 'keeper Jimmy Allen takes a high cross; Wednesday's Hugh Dowd challenges.

HAVE YOU A FEW HOURS TO SPARE?

Sheffield Wednesday will shortly be opening two new kiosks to sell Owls Lottery and Moonraker tickets in major stores. Part-time staff are required to work in the kiosks and hours can be arranged to suit individually. Anyone interested can find out more by contacting Dennis Woodhead at 337235.

Rothervale Construction Ltd.

Building & Civil Engineering Contractors

Telephone Chesterfield 450868

Whitting Valley Road
Old Whittington
Chesterfield

**Wyko..
another word for
availability**



**Wyko Bearings Sheffield
for bearings,
chain and transmission
products**

TEL: (0742) 449827

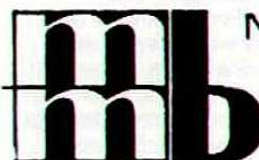
WEST
PACKAGING

Ring Sheffield
20225

FOR PACKING CASES

in Wood, Plywood & Heavy Duty Corrugated Board
also Tensional Strapping and Sellotape

W. K. WEST LIMITED, SHEFFIELD



**M.M. BELL
& SONS,
LTD.**

Specialists in Cardboard Box Making

102 ARUNDEL ST, Telephone. 24740. 29839.
SHEFFIELD
S1 3BA

AUTOWAYS

**first for Ford
in Sheffield**



Shoreham Street, Sheffield. (Nr. Midland Station)

Tel. 78271



Purchase your Season Ticket before 30th June — and Save 25%

Season Ticket Prices 1979-80 Season (including V.A.T. at 8%)

Location	Age Group	Day	Gross	Up to 30th June 25% off	After 30th June 15% off
NORTH/SOUTH STANDS Front/Back Centre	Adult	£2.40	£55.20	£41.40	£46.90
NORTH/SOUTH STANDS Front/Back Centre	Juvenile	£1.70	£39.10	£29.30	£33.25
	Senior Citizen	£1.70	£39.10	£22.20 Special Rate	£25.20 Special Rate
NORTH STAND WINGS WEST STAND SOUTH STAND WING (Penistone Road)	Adult	£2.00	£46.00	£34.50	£39.10
NORTH STAND WINGS WEST STAND SOUTH STAND WING (Penistone Road)	Juvenile	£1.50	£34.50	£25.80	£29.30
	Senior Citizen	£1.50	£34.50	£21.50 Special Rate	£24.40 Special Rate
GROUND	Adult	£1.10	£25.30	£19.00	£21.50
GROUND	Juvenile	£0.80	£18.40	£13.80	£15.60
	Senior Citizen	£0.80	£18.40	£12.50 Special Rate	£14.20 Special Rate

Season 1979-80

- Applicants are reminded that tickets are issued subject to the conditions printed in the booklet, and that purchase of same is an acceptance of these conditions.
- To qualify for maximum discount (25%), applications must be received at the Box Office with full remittance by Saturday, 30th June, 1979.
- All applications must include remittance and return second class postage (no envelope) for each ticket.
- To qualify for a Juvenile privilege, applicants must be under 14 years of age on 18th August, 1979.
- Documentary evidence must be produced personally at our Box Office for Senior Citizen and Juvenile concession rates.
- With the exception of WEST STAND and GROUND, Juvenile tickets can only be purchased with an adult ticket.

- Original and 'A' Class Shareholders are entitled to a further 5% discount on the prices charged to non-shareholders. Shareholders' passes will be retained by the club for the period covered by the Season Tickets.
- 'B' Class Shareholders are entitled to £10 discount for each £100 Share held on the prices charged to non-shareholders.
- 'C' Class Shareholders are entitled to £1 discount for each £10 Share held on the prices charged to non-shareholders.
- Please note seats **CANNOT** be changed once the season has commenced. Please arrange to inspect your seat **BEFORE** the start of the season.

Please forward me Season Ticket Application Form 1979-80

Name _____

Address _____

Howard Wilkinson

Millions of people the world over will shortly tune in to one of the great sporting occasions. Wembley in May, the F.A. Cup Final has come to be more than just a game between two teams involving two sets of rival fans. For Managers Dave Sexton and Terry Neill, this larger than life importance that the game has now assumed will present very special problems. Much rubbish is written about football management and the word motivation suffers as much as any in this respect. Too many people it seems to me assume that getting players to perform is a matter of winding them up to a frenzy and that just as they start foaming at the mouth, turning them out on the park.

Well, this might work for some, but it won't work for all and certainly won't work all of the time.

Players are people, people are different. You can't get the best from all of them if you treat them all the same. As individuals they will respond to individual treatment. Secondly, there is a thin dividing line between 'just enough' and 'too much' in the motivation stakes. If a player becomes too keyed up he freezes, nervous caution replacing confident optimism. Arsenal will have learned, I'm sure, from their Wembley visit last year, when the occasion seemed too much for too many of them.

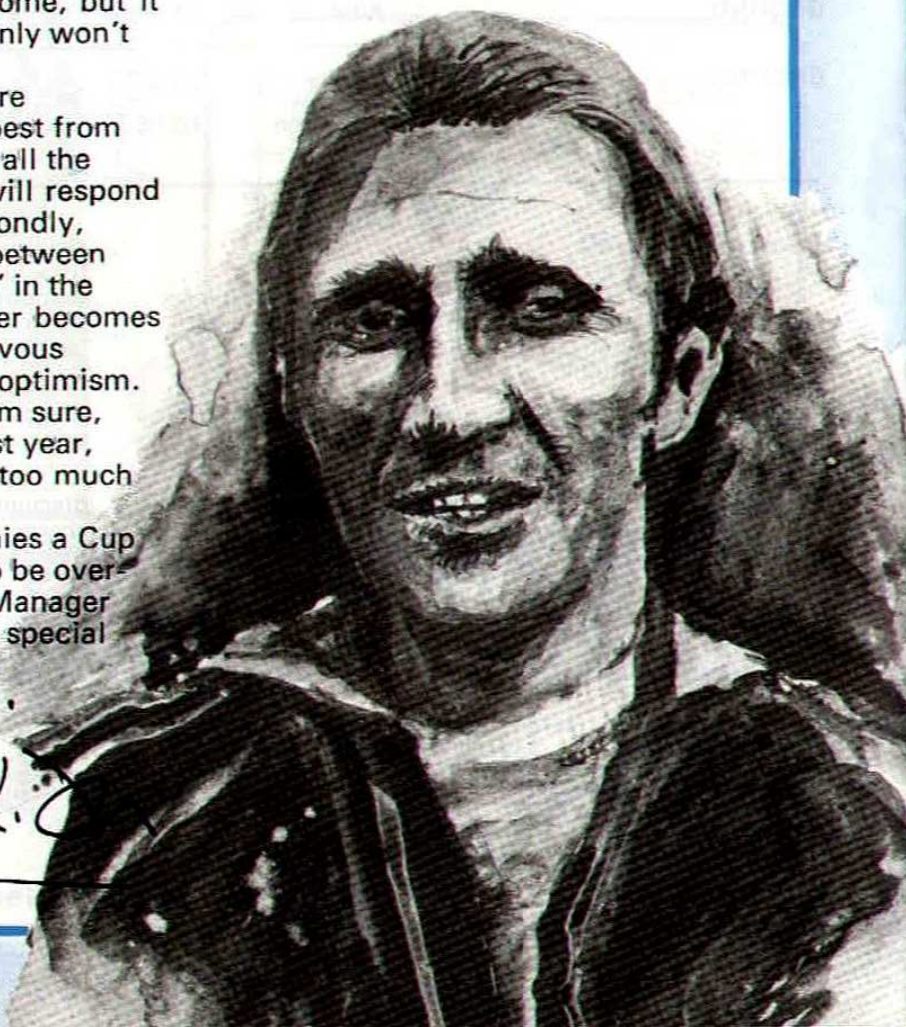
The ballyhoo that accompanies a Cup Final causes most players to be over-motivated if anything. The Manager who earns his corn will take special

steps to try to reduce this to a controllable level, to demotivate if you like. Of course, it will affect some more than others and he must ensure that different people are treated differently in order that individually they are right on the day.

Good footballers need cool heads and fiery hearts; too much of either and performance suffers. The motivation myth makes for good copy but it's not the simple exercise that too often it's made out to be.

'Wembley Nerves' often make for poor finals. Let's hope that Dave Sexton and Terry Neill can crack the 'nerves nut' this year and thus provide us with a final befitting the build-up.

Howard Wilkinson



GLEESON

CHANTREY HOUSE, WOODSEATS, SHEFFIELD S8 0SG. Tel. (0742) 56141

The following new properties are currently on offer:

TOTLEY BROOK ROAD, SHEFFIELD.

Choice of two-bed bungalows, three- and four-bed houses and flats in this most desirable residential area. Gas-fired central heating and garages. Prices from approximately £16,100.

HOLME HALL FARM, CHESTERFIELD.

Adjacent to the Derbyshire countryside, but close to the amenities of Chesterfield and within easy commuting distance of Sheffield, the development consists of detached and semi-detached houses and bungalows all with gas-fired central heating. Prices from approx. £14,950 to £19,330.

ACORN HILL, STANNINGTON.

This exciting village-style development of detached, semi-detached and town houses and bungalows blends sympathetically with the historic village of Stannington. Choice of 21 different types, all stone built with gas-fired central heating. Prices from approx. £16,075 to £30,630. Sales Office open daily (except Wednesday) from 1-5 pm at Nook Lane, Stannington. Phone 331629.

SNAITHING LANE, SHEFFIELD.

Twelve superior designed dwellings in a most sought-after area, comprising four-bed houses of five different designs in reconstructed stone. Central-heating, double-glazing and double-garage. Prices to be released in the near future.

SANDYGATE ROAD. Commencing shortly, a development of fifteen 1-4 bed flats fronting on to Sandygate Road, and a further development of 43 dwellings including two- and three-bed bungalows and four-bed houses fronting on to Sandygate Park Road. Details to be released shortly.

Developments are also available in SURREY, HAMPSHIRE, SUSSEX, WILTSHIRE AND COUNTY DURHAM. Details of these are available from E P Cramp, Estates Department, Gleeson Homes Limited. Tel: 01 337 6688.

Prices correct at time of going to print.

THE BUILDERS OF QUALITY HOMES

SHEFFIELD SPORTS STADIUM

PENISTONE ROAD, OWLERTON, SHEFFIELD S6 2DE. Tel: 343074

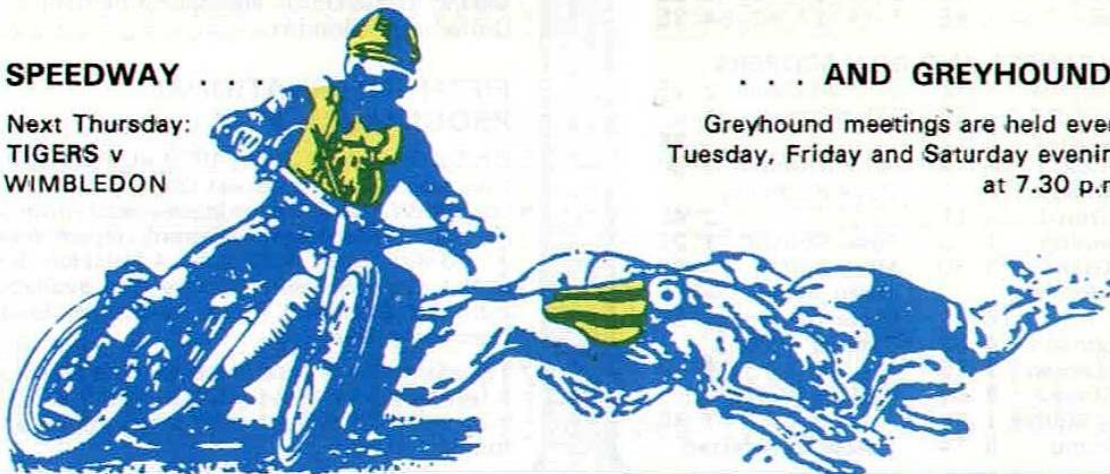
FOR THE BEST IN RACING

SPEEDWAY . . .

Next Thursday:
TIGERS v
WIMBLEDON

. . . AND GREYHOUNDS

Greyhound meetings are held every
Tuesday, Friday and Saturday evening
at 7.30 p.m.



FACTS & fixtures

FORTHCOMING FIXTURES

17	BLACKPOOL	Thur. 7.30
19	HULL CITY	Sat. 3.00

FOOTBALL LEAGUE DIVISION THREE

Not including Rotherham v Shrewsbury

	P	W	D	L	F	A	Pts
Swansea	45	23	12	10	81	60	58
Watford	45	23	12	10	79	52	58
Swindon	44	25	7	12	71	45	57
Shrewsbury	44	19	19	6	54	39	57
Gillingham	44	19	17	8	61	42	55
Carlisle	46	15	22	9	53	42	52
Colchester	46	17	17	12	60	55	51
Exeter	44	17	15	12	53	53	48
Hull	43	18	11	14	63	52	47
Brentford	45	18	9	18	50	47	45
Southend	46	15	15	16	51	49	45
Plymouth	46	15	14	17	67	68	44
Chester	46	14	16	16	57	61	44
Oxford	45	14	17	14	43	49	44
Blackpool	44	17	9	18	56	55	43
Sheffield Wed.	43	11	19	13	47	49	41
Bury	44	10	20	14	56	62	40
Rotherham	43	15	10	18	43	51	40
Chesterfield	43	13	14	16	49	59	40
Mansfield	42	10	18	14	46	49	38
Peterborough	44	10	14	20	41	62	34
Walsall	45	10	12	23	55	67	32
Tranmere	46	6	16	24	45	78	28
Lincoln	45	7	11	27	41	84	25

APPEARANCES AND GOALSCORERS

Ray Blackhall	— 32	Gordon Owen	2 25
Bob Bolder	— 20	Mike Pickering	
Terry Curran	1 12		— 39
Brian Cox	— 4	Ian Porterfield	1 56
Dave Cusack*	— 1	Dave Rushbury	
Hugh Dowd	— 11		2 48
Ian Fleming	1 3	Peter Shirtliff	1 25
Dave Grant	1 30	Mark Smith	— 32
Brian Hornsby	18 55	Kevin Taylor	— 3
Jeff Johnson	4 52	Chris Turner	— 32
Denis Leman	1 25	Tommy Tynan*	
John Lowey	5 36		1 12
Jimmy Mullen	1 38	Rodger Wylde	17 49
Ian Nimmo	5 14		

* Now transferred



Jimmy Mullen scored his first goal of the season in the Derby against Rotherham United last Monday.

FIFTH INTERNATIONAL PROGRAMME FAIR

On Saturday, 9th June, 1979 at The Connaught Rooms, Great Queen Street, London W.C.2 (three minutes' walk from Holborn Underground Station). Open from 11.00 a.m. until 4.30 p.m. Admission 50p at the door. Advance tickets 25p available from 66 Southend Road, Wickford, Essex (enclosing SAE).

Thousands of programmes for sale from a few pence to a few pounds. There will also be a display of rare programmes and football curios.

1 2 3 4 5 6 7 8 9 10 11 12

Peterborough	0-2	Bolder	Shirtliff	Grant	Smith	Dowd	Mullen	Owen	Porterfield	Tynan	Johnson	Hornsby	McKeown
Colchester	0-0	Bolder	Blackhall	Grant	Rushbury	Dowd	Smith	Mullen	Porterfield	Tynan	Johnson	Owen	Leman
Lincoln	2-1	Bolder	Shirtliff	Blackhall	Rushbury	Smith	Mullen	Owen	Porterfield	Tynan	Johnson	Hornsby ¹	Wylde
Southeast	3-2	Bolder	Blackhall	Grant	Rushbury	Dowd	Mullen	Wylde	Porterfield	Tynan	Johnson	Hornsby ²	Owen
Gillingham	0-0	Bolder	Blackhall	Grant	Rushbury	Dowd	Mullen	Wylde	Porterfield	Tynan	Johnson	Hornsby	Nimmo
Mansfield	1-1	Bolder	Blackhall	Grant	Rushbury	Dowd	Mullen	Wylde	Porterfield	Tynan	Johnson	Hornsby ¹	Smith
Plymouth	2-3	Bolder	Blackhall	Grant	Rushbury	Dowd	Mullen	Wylde	Porterfield	Tynan	Johnson	Hornsby	Nimmo
Bury	0-0	Bolder	Blackhall	Grant	Rushbury	Dowd	Mullen	Wylde	Porterfield	Tynan	Johnson	Hornsby	Nimmo
Swindon	0-3	Bolder	Blackhall	Grant	Rushbury	Dowd	Mullen	Wylde	Porterfield	Smith	Johnson	Hornsby	Owen
Rotherham	1-0	Bolder	Blackhall	Grant	Smith	Pickering	Rushbury	Wylde	Porterfield	Leman	Johnson	Hornsby	Strutt
Carlisle	0-0	Bolder	Blackhall	Grant	Smith	Pickering	Rushbury	Wylde	Porterfield	Leman	Johnson	Hornsby	Owen
Oxford	1-1	Cox	Blackhall	Grant	Smith	Pickering	Rushbury	Wylde	Porterfield	Leman	Johnson	Hornsby	Wylde
Shrewsbury	2-2	Cox	Blackhall	Grant	Smith	Pickering	Rushbury	Wylde	Porterfield	Leman	Johnson	Hornsby	Owen
Exeter City	2-1	Cox	Blackhall	Grant	Smith	Pickering	Rushbury	Wylde	Porterfield	Leman	Johnson	Hornsby	Owen
Walsall	0-2	Cox	Blackhall	Grant	Smith	Pickering	Rushbury	Wylde	Porterfield	Leman	Johnson	Hornsby	Owen
Blackpool	1-0	Turner	Blackhall	Rushbury	Smith	Pickering	Rushbury	Wylde	Porterfield	Leman	Johnson	Hornsby	Strutt
Lincoln	0-0	Turner	Blackhall	Rushbury	Smith	Pickering	Rushbury	Wylde	Porterfield	Leman	Johnson	Hornsby	Wylde
Colchester	0-1	Turner	Blackhall	Rushbury	Smith	Pickering	Rushbury	Wylde	Porterfield	Leman	Johnson	Hornsby	Owen
Scunthorpe (FA1)	1-1	Turner	Blackhall	Rushbury	Smith	Pickering	Rushbury	Wylde	Porterfield	Leman	Johnson	Hornsby	Owen
Scunthorpe (FA1)	1-0	Turner	Blackhall	Rushbury	Smith	Pickering	Rushbury	Wylde	Porterfield	Leman	Johnson	Hornsby	Owen
Swansea	2-4	Turner	Blackhall	Rushbury	Smith	Pickering	Rushbury	Wylde	Porterfield	Leman	Johnson	Hornsby	Owen
Chester	0-0	Turner	Blackhall	Rushbury	Smith	Pickering	Rushbury	Wylde	Porterfield	Leman	Johnson	Hornsby	Owen
Tranmere R. (FA2)	1-1	Turner	Blackhall	Rushbury	Smith	Pickering	Rushbury	Wylde	Porterfield	Leman	Johnson	Hornsby	Owen
Tranmere R. (FA2)	4-0	Turner	Blackhall	Rushbury	Smith	Pickering	Rushbury	Wylde	Porterfield	Leman	Johnson	Hornsby	Owen
Chesterfield	3-3	Turner	Blackhall	Rushbury	Smith	Pickering	Rushbury	Wylde	Porterfield	Leman	Johnson	Hornsby	Owen
Arsenal (FA3)	1-1	Turner	Blackhall	Rushbury	Smith	Pickering	Rushbury	Wylde	Porterfield	Leman	Johnson	Hornsby	Owen
Arsenal (FA3)	1-1	Turner	Blackhall	Rushbury	Smith	Pickering	Rushbury	Wylde	Porterfield	Leman	Johnson	Hornsby	Owen
Arsenal (FA3)	2-2	Turner	Blackhall	Rushbury	Smith	Pickering	Rushbury	Wylde	Porterfield	Leman	Johnson	Hornsby	Owen
Arsenal (FA3)	3-3	Turner	Blackhall	Rushbury	Smith	Pickering	Rushbury	Wylde	Porterfield	Leman	Johnson	Hornsby	Owen
Arsenal (FA3)	0-2	Turner	Blackhall	Rushbury	Smith	Pickering	Rushbury	Wylde	Porterfield	Leman	Johnson	Hornsby	Owen
Plymouth	0-2	Turner	Blackhall	Rushbury	Smith	Pickering	Rushbury	Wylde	Porterfield	Leman	Johnson	Hornsby	Owen
Southend	1-2	Turner	Blackhall	Rushbury	Smith	Pickering	Rushbury	Wylde	Porterfield	Leman	Johnson	Hornsby	Owen
Tranmere	1-1	Turner	Blackhall	Rushbury	Smith	Pickering	Rushbury	Wylde	Porterfield	Leman	Johnson	Hornsby	Owen
Carlisle U	0-0	Turner	Blackhall	Rushbury	Smith	Pickering	Rushbury	Wylde	Porterfield	Leman	Johnson	Hornsby	Owen
Shrewsbury	0-0	Turner	Blackhall	Rushbury	Smith	Pickering	Rushbury	Wylde	Porterfield	Leman	Johnson	Hornsby	Owen
Gillingham	2-1	Turner	Blackhall	Rushbury	Smith	Pickering	Rushbury	Wylde	Porterfield	Leman	Johnson	Hornsby	Owen
Walsall	2-0	Turner	Blackhall	Rushbury	Smith	Pickering	Rushbury	Wylde	Porterfield	Leman	Johnson	Hornsby	Owen
Brentford	1-0	Turner	Blackhall	Rushbury	Smith	Pickering	Rushbury	Wylde	Porterfield	Leman	Johnson	Hornsby	Owen
Exeter	2-2	Turner	Blackhall	Rushbury	Smith	Pickering	Rushbury	Wylde	Porterfield	Leman	Johnson	Hornsby	Owen
Peterborough	3-0	Turner	Blackhall	Rushbury	Smith	Pickering	Rushbury	Wylde	Porterfield	Leman	Johnson	Hornsby	Owen
Watford	0-1	Turner	Blackhall	Rushbury	Smith	Pickering	Rushbury	Wylde	Porterfield	Leman	Johnson	Hornsby	Owen
Mansfield	1-2	Turner	Blackhall	Rushbury	Smith	Pickering	Rushbury	Wylde	Porterfield	Leman	Johnson	Hornsby	Owen
Swansea	0-0	Turner	Blackhall	Rushbury	Smith	Pickering	Rushbury	Wylde	Porterfield	Leman	Johnson	Hornsby	Owen
Hull City	1-1	Turner	Blackhall	Rushbury	Smith	Pickering	Rushbury	Wylde	Porterfield	Leman	Johnson	Hornsby	Owen
Chesterfield	4-0	Turner	Blackhall	Rushbury	Smith	Pickering	Rushbury	Wylde	Porterfield	Leman	Johnson	Hornsby	Owen
Brentford	1-2	Turner	Blackhall	Rushbury	Smith	Pickering	Rushbury	Wylde	Porterfield	Leman	Johnson	Hornsby	Owen
Tranmere	1-2	Turner	Blackhall	Rushbury	Smith	Pickering	Rushbury	Wylde	Porterfield	Leman	Johnson	Hornsby	Owen
Oxford	1-1	Bolder	Blackhall	Grant	Mullen	Pickering	Rushbury	Wylde	Porterfield	Leman	Johnson	Hornsby	Owen
Cherter	2-2	Bolder	Blackhall	Grant	Mullen	Pickering	Rushbury	Wylde	Porterfield	Leman	Johnson	Hornsby	Owen
Bury	0-0	Bolder	Blackhall	Grant	Mullen	Pickering	Rushbury	Wylde	Porterfield	Leman	Johnson	Hornsby	Owen
Watford	2-3	Bolder	Blackhall	Rushbury	Mullen	Pickering	Rushbury	Wylde	Porterfield	Leman	Johnson	Hornsby	Owen
Rotherham United	2-1	Bolder	Blackhall	Rushbury	Mullen	Pickering	Rushbury	Wylde	Porterfield	Leman	Johnson	Hornsby	Owen

Fixtures played at Hillsborough appear in bold type Sheffield Wednesday's score is given first Name in bold indicates goalscorer * indicates substituted player and substitute

PICTURE



ACTION v WATFORD . . . 18-year-old Peter Shirtliff races in to score his first-ever goal for S

RE PAGE



first-ever goal for Sheffield Wednesday . . . and it has given him that "top of the world" feeling!

The Hillsborough SQUAD

HILLSBOROUGH SQUAD REPORTS

Monday, 30th April, 1979

CENTRAL LEAGUE STOKE CITY 1 WEDNESDAY 2

Among several fine performances this season, this win must rank as one of the best against a team who occupied second spot in the League.

Wednesday, showing plenty of attacking flair, deservedly went into the lead with a fine opportunist goal by Brian Strutt and before half-time may well have increased that lead.

The Owls still held the upper hand in the second half but a terrible mix-up in defence enabled Stoke to equalise.

However, justice was seen to be done with a superb match-winning goal by Kevin Taylor, who latched on to a fine through ball from Henson, coolly dribbled round the advancing ex-Owl goalkeeper Peter Fox, to slot the ball home.

Team: Turner, Stell, Williamson, Taylor, Allwood, Sterland, McKeown, Howard, Nimmo, Henson, Strutt. Sub: Fleming.

Tuesday, 1st May, 1979

NORTHERN INTERMEDIATE LEAGUE HARTLEPOOL UTD. 2 WEDNESDAY 0

Both sides settled down very quickly and produced some entertaining football with both 'keepers kept very busy. It was surprising that the interval arrived with the scoresheet blank.

The Owls were forced to make a half-time substitution for injured Robson, and whether this unsettled the side or not, it was the home side who called the tune in the second half.

Aided by some fine work by goalkeeper Brian Cox, the Owls held out well but the final twelve minutes proved very traumatic. Centre-back Matthewson had to leave the field injured and straight away Hartlepool took advantage of the extra man to go ahead. Wednesday's troubles were further

increased when Watson took a knock and required treatment, during which time Hartlepool put the issue beyond doubt.

Team: Cox, Chesters, Jepson, Litherland, Matthewson, Watson, Crowcroft, Shirtliff (Paul), Holling, Campbell, Robson. Sub: Bentley.



Kevin Taylor, hit match-winner at Stoke City

THIS SEASON'S GOALSCORERS

CENTRAL LEAGUE

Brian Strutt 13
Ian Nimmo 11
Gordon Owen 8
Kevin Taylor 8
Colin Gregson 4
Melvyn Sterland 4
Phil Campbell 3
Tony Henson 3

Mark Smith 3
Mick Bentley 2
Ian Fleming 2
David Grant 1
Andy Hill 1
Denis Leman 1
John Lowey 1
Charlie Williamson 1

CENTRAL LEAGUE HOME GAME
HUDDERSFIELD, Mon., 14th May, 7 p.m.

Pickford Deighton Group

can now offer
in Sheffield

Chrysler and Vauxhall

at Ecclesall Rd.
Telephone 664411

and

Toyota

at Ellin Street
Telephone 78717



provides excellent
facilities for all
occasions.

Weddings, Anniversaries,
Coming of Age, Family Reunions,
Office, Works and Club
Dinner Dances, Parties

Extra facilities can be made
available within the ground itself for
Conferences, Sales and Area
Meetings, Seminars, Exhibitions and
Promotions of all kinds, with a full
range of meals and refreshments
in the Tavern at Hillsborough.

Sheffield 343123 ex. 31

Managed on behalf of Sheffield Wednesday
Football Club by Status Taverns Limited

Star Man

The player
with the most
'Star Man'
awards at the
end of the
season will
receive a prize
of £50.

Sponsored by



v Watford/Mullen . . Rotherham/Pickering

J.W. Northend Ltd.

Fine print and design

49 WEST STREET · SHEFFIELD · S1 3SH

Telephone 730341

Lottery

and details from our commercial office

RESULTS FOR LOTTERY 76, DRAWN ON TUESDAY, 1st MAY, 1979

£1,000	£50 CONSOLATIONS FOR LAST FOUR FIGURES	45743
£500	£5 CONSOLATIONS FOR LAST THREE FIGURES	20835
£250	£1 CONSOLATIONS FOR LAST TWO FIGURES	41197

FIRST GOLD WATCH: 45931 SECOND GOLD WATCH: 28354

FIVE BONUS PRIZES OF £50: 08521 33817 43097 40593 20099

RESULTS FOR LOTTERY 77, DRAWN ON TUESDAY, 8th MAY, 1979

£1,000	£50 CONSOLATIONS FOR LAST FOUR FIGURES	46925
£500	£5 CONSOLATIONS FOR LAST THREE FIGURES	25581
£250	£1 CONSOLATIONS FOR LAST TWO FIGURES	22613

FIRST GOLD WATCH: 36997 SECOND GOLD WATCH: 39179

FIVE BONUS PRIZES OF £50: 41893 12512 16062 25899 44236

**Just a few more Agents will make
our Lottery a complete sell-out**

Good commission and
concessions are offered,
so for further details on
how to become an
important part of the club
contact Dennis Woodhead
at 337235.



MAGIC moments

Wednesday's first venture into European competition

Wednesday's first-ever venture into competitive European soccer came in 1961-62 when the Owls were invited to take part in the Inter-Cities Fairs Cup; the forerunner of today's UEFA Cup.

Having disposed narrowly of France's Olympique Lyonnais 7-6 on aggregate, the Owls hit form in the next round as they crushed the holders A.S. Roma 4-0 at home and easily qualified for the quarter-finals.

The draw for the quarter-finals put Wednesday with the mighty Barcelona, who were even then close rivals to the legendary Real Madrid. In fact, the team that Barcelona sent to Sheffield in late February, 1962, boasted nine internationals, both Spanish and South American, and had a market value of some half-million pounds at a time when transfer fees were relatively small.

Wednesday's problems were generated by a wretched February that comprised three home defeats, including failure to win a Cup replay at Hillsborough against Manchester United.

Manager Vic Buckingham, anxious to give the Owls a chance of a healthy lead to take to the return leg, planned to use a 4-2-4 system against a team perhaps expecting a traditional English approach.

It was Barcelona who settled first with their sharp skills and smooth teamwork; a combination that allowed them to take a 15-minute lead. But in the 28th minute an increasingly tackling Owls side built a good move between Colin Dobson and Gerry Young and John Fantham's dramatic diving header levelled the score.

The Spaniards shrugged off the disappointment to grab the lead once more in the 35th minute when a dipping 20-yarder found its

way over the leaping Ron Springett, but Wednesday levelled with another great goal right on half-time. Fantham's diagonal pass found Alan Finney bearing in to crack the ball home.

The second half was no less exciting than the first, and when it was five minutes old Finney—holding off some wild tackles—fed wing-half Robin Hardy. The youngster dummied to shoot but slipped the ball across and Fantham put the Owls ahead 3-2.

It wasn't much of a lead to take to Spain, and it only lasted 11 minutes in Barcelona before the Owls went out 2-0 in a brave performance inspired by some great wing play from Alan Finney.

Barcelona eventually made the final, only to lose to another Spanish team.



The Owls programme for the Fairs Cup quarter-final.



Imperial Portable Typewriters at special prices

S. Clough Ibbotson & Co. Ltd.
56 Campo Lane, Sheffield, S1 2EG
Telephone 22475 & 21547

NATIONAL

Pond Street Office, Sheffield S1 2BD.
Telephone 739966

Coach trips to most away matches.
Full details are published in "The Star"
each Friday.

**TRAVEL WITH THE FIRM THAT
CARRIES YOUR TEAM**

NORTON GROUP SERVICE TO SHEFFIELD



W. E. NORTON (MACHINE TOOLS) LTD./ ERFURT MACHINERY LTD.

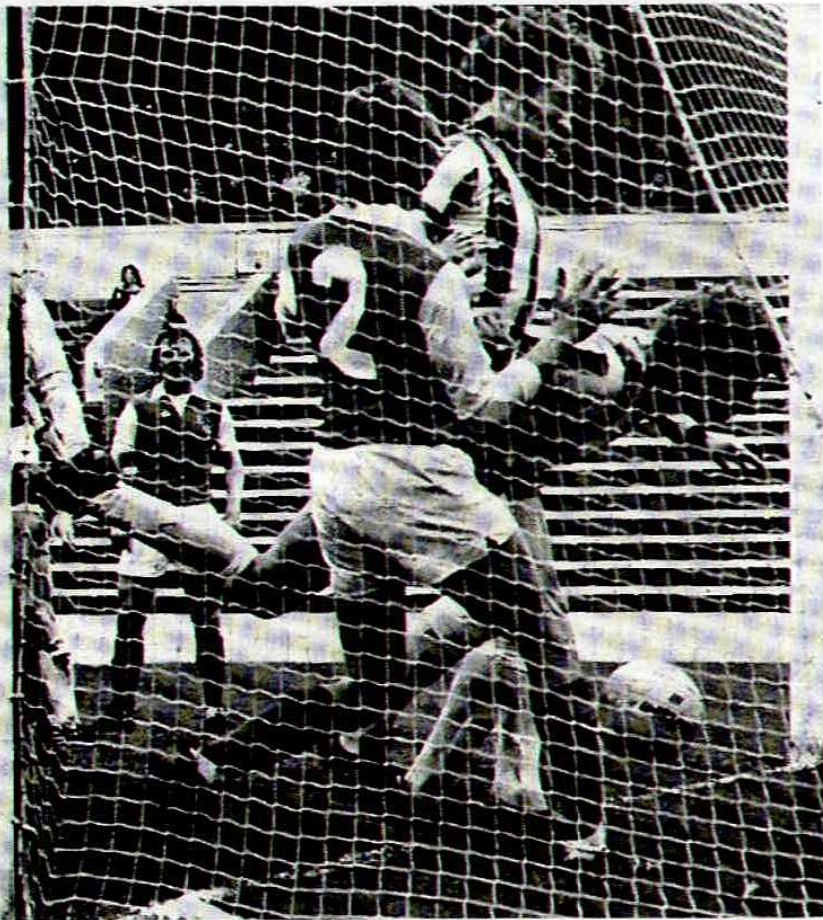
The very best in machinery and machine tools sales and service

TEL. SHEFFIELD 697341

IRVING WHITE LTD.

The complete engineers equipment, cutting tools, measuring tools
and machine shop equipment service

TEL. SHEFFIELD 737401



ACTION v ROTHERHAM . . . Jimmy Mullen watches anxiously as his header crosses the line, with Ian Fleming and John Lowey following up. Ian Fleming scores the winner, and his first goal for the Owls.



Shop

Mirrors	£7.00
Badges	45p
Official Pin Badge	45p
Silk Scarves	75p
Woollen Scarves:	
Bar (home & away)	£1.60
College or Named	£2.00
'Charlton's Owls'	£2.00
Bob Caps (h & a.)	99p
Ties	£2.75
(blue, green, brown)	
Owl Crystal Glass	
Paper Weight	£8.50
T-Shirts:	
Cotton	from £1.75
Nylon	from £1.75
Briefs:	
Men's & O.S.	£1.60
Boys'	£1.35
Ladies'	£1.50
Pullovers:	
34-46, Royal Blue,	
Acrylic	£5.95
34-46, Asstd. Colours,	
Acrylic	£7.95
34-46, Asstd. Colours,	
Wool	£10.50
Botany Wool	£9.75
Soft Toys:	
Mice	40p
Teddies	from £1.20
Owl, Scarf & Hat	£3.25
Dogs	£1.99, £3.25
Elephants	£2.50
Octopus	£3.00
Kermit	£2.99
Emu	£5.00
Wellington Bear	£6.00
Owl Money Boxes	£1.75
Ceramic Tiled Owls	£16.00

PLEASE NOTE

The Shop now has a new telephone number: 343342

OPENING HOURS

Monday, Tuesday,
Wednesday and Friday
10.00 a.m. to 4.00 p.m.
Saturday, 10.00 a.m. to
3.00 p.m. (5.00 p.m. on
first team match days)
Closed: Thursday, Sunday



Owl Shop Gift Vouchers

£1 and £5

Football Shirts,	
Short Sleeve	from £3.50
Football Shirts	from £6.25
Football Shorts	from £1.85
Football Socks	from 84p
Hooded Acrylic Tops	
.	from £6.50
Anoraks, 24-46	from £5.00
Sweaters, Blue with	
Knitted Motif,	
Sizes 22-44	from £4.99
Boot Money Boxes	£1.75
Shoulder Bags	£3.20

Grip Bags	£4.75
Owl Spoon Rests	95p
Coffee Mugs	65p
Marathon Men Posters	25p
Glass Ash Trays	£1.50
Railway Nameplate	£10.00
Necklaces	65p
De-luxe Scarves	£2.25
De-luxe Bob Caps	£1.25
Bukta Sweat Shirts	£7.50
Bukta T-Shirts:	
Boys'	£3.99
Large	£5.00
Copper Wall Plaques	£3.50
Wing Patches	45p & £1.25
Glass Tankards	95p, £1.50
Belts	45p
Key Rings	25p, 80p
Handkerchiefs:	
Ladies'	49p, £1.49
Gent's	49p, £1.55
Wednesday Towels	£1.99

NEW IN . . .

Club Track Suits and	
Playing Kits for Children	
Golfing Umbrellas	£6.00
Owl Earrings	£2.99
Ladies' Owl Necklaces	£2.99

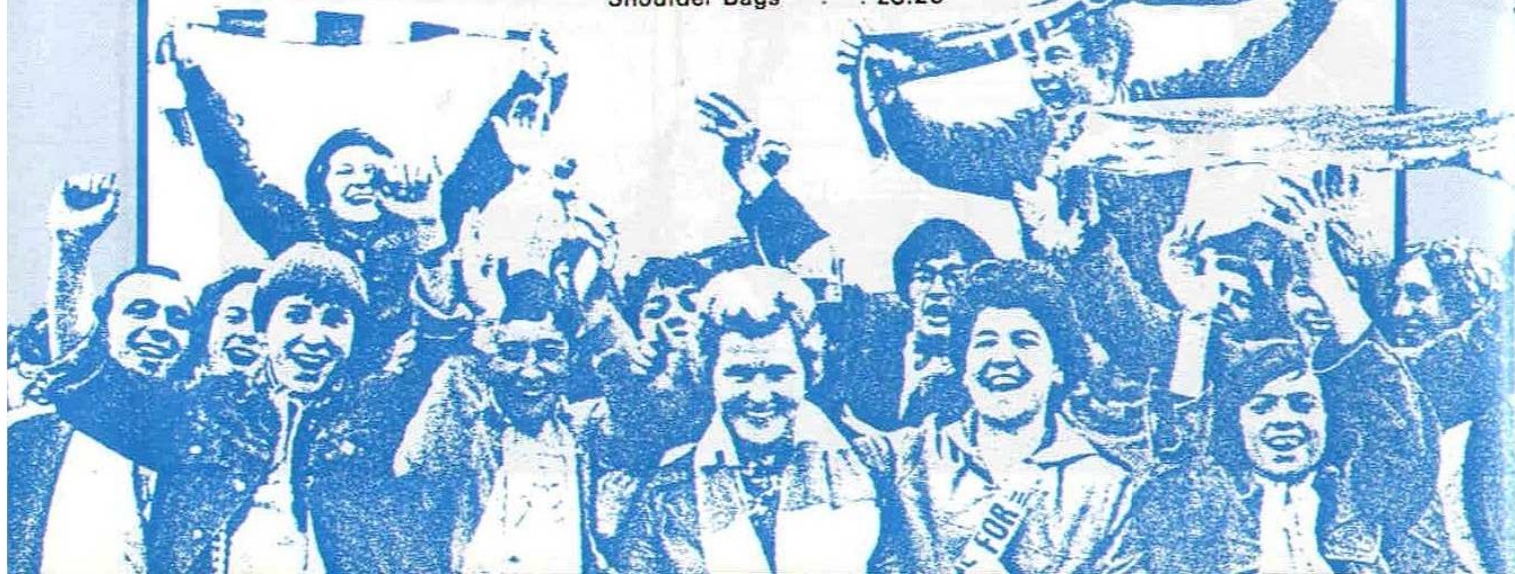
North American Clubs

Soccer Pennants

24 different kinds £1 each

Postage extra on all orders
by post

The Owl Shop,
S.W.F.C., Hillsborough,
Sheffield, S6 1SW.



Read all about it

Season '78-9

A guest article by
Peter Ferguson of the 'Daily Mail'

Has anybody else noticed how The Greatest League in the World, as the pundits are so fond of describing the English First Division, has become that little bit iaded this season? Nothing too serious, of course. Just that there were only ever four teams in the shout for the Championship, and as it became more evident Liverpool would emerge yet again at the top, where was the interest?

In truth, the so-called title chase this season has been marginally more exciting than a wet Sunday afternoon of party political broadcasts. Forest had other things on their mind, Albion seemed bewildered at the sudden success, and Everton's style could have been patented as a cure for insomnia.

The basic pattern has been there for years—half a dozen teams (or less) dominate at the top, few have the ability or courage to cast off the chains of caution and actually entertain. (Go on, you remember entertainment . . . don't you?)

Luckily there has been an alternative this season—the rest of the League. Those three divisions which sometimes rate a passing mention by the national media have rescued us from a dose of the post-Argentina blues and, I submit, prevented the League season from becoming a bore.

All the excitement of three genuinely gripping promotion struggles has clearly upstaged Liverpool's perennial, predictable power-play push for the Championship. The Second Division has offered Terry Venables' Crystal Palace a fascinating embryo that could become one of the teams of the 80's. and Billy Elliott's enigmatic Sunderland, being carried to the verge of the First Division on a wave of fervour, backstage intrigue and superb/irritating/hotchpotch performances on the field.

The chase was a cliffhanger with a bitter taste, for two of the five promotion contenders would miss out—who could pretend not to be savouring the next instalment?

Maybe the Third has failed to provide a Wrexham this time, but Watford and Shrewsbury both proved in Cup matches they have the bearing of Second Division sides. Yet towards the end neither could be sure of going up, and the under-rated Swindon squad threatened them both.

Grimsby and Barnsley made us all aware of the tremendous fight being staged in the Fourth, and there again a couple of sides with obvious merit were bound to be consigned to at least a further session in the basement section.

The little clubs inevitably catch the eye in the Cup—this time they've hogged far more of the limelight for far longer.

It's no accident that a prominent national newspaper writer told his boss he would prefer to cover a Shrewsbury match instead of the First Division, as recently happened. I don't suggest I would snub Arsenal v Spurs in favour of a Third Division game. But what about Swindon v Watford in preference to Coventry v Chelsea? Or Sunderland v Palace instead of Liverpool v Middlesbrough?

The First Division is the big one, as Forest will confirm by winning the European Cup match in Munich on 30th May. But for once the also-rans have taken the lead and shown us there's life below rung 22 on the League ladder.



JACK AND RON TEAM UP

Manager Jack Charlton and ex-Owl Ron Springett (above) will be lining up together on Sunday in a team selected from England's 1966 World Cup winning squad. The game, in aid of charity, is at the White City Stadium, near Wembley, and the opposition—TV All Stars—hope to include Jim Davidson, Mick Robertson, Patrick Mower, Tony Selby, Robert Lindsay, David Jason, David Hamilton and Dennis Waterman.

GET WELL SOON, FRANK

We are sorry to hear that Frank Renshaw, our Chief Steward in the North Stand, was taken ill at the Watford game and was rushed to the Northern General Hospital. We understand Frank is making favourable progress and take this opportunity to wish him a very speedy recovery.

Read all about it



The Owls give their
forecast for the big
game tomorrow,

Arsenal v Manchester United



At 3.00 p.m. tomorrow, the English football showpiece of the season will get under way when the Red Rose of Lancashire, Manchester United, meets the Pride of London, Arsenal, in the 51st Wembley Cup Final.

Who will win the 1979 F.A. Cup? In most quarters, opinion is that it will be a very close encounter. We asked most of the Owls' playing and coaching staff for their own version of how the game will go.

Manager **Jack Charlton** says that all Cup Finals were difficult to forecast but this one more so than most. Both teams are so evenly balanced



Arsenal have had a few scares on the way to Wembley, and none more so than when **Rodger Wylde** beat two defenders to put the Owl's 1-0 up at Highbury, only for the Gunners to score a last minute equaliser.

he just wouldn't like to say who would win, but it would maybe be nice for Sheffield Wednesday to say they did at least lose to the Cup winners.

Young full-back **Peter Shirliff** also found the choice difficult and is certain it will go to at least one replay before eventually going the way of Arsenal.

As might have been expected, members of the staff who have had previous connections with the competing clubs stood loyal to them. One time Gunner **Brian Hornsby** holds the view that having disappointed in last years' final, Arsenal would not let the opportunity slip a second time, but **Maurice Setters**, member of United's 1963 Cup winning side, **John Lowey** and **Lindsay McKeown**, both of whom served their apprenticeship at Old Trafford, were quick to disagree. Maurice thinks Arsenal are too predictable and play to a set pattern which will suit the Manchester side. Lindsay supports this and added that United will be more committed, but John Lowey believes that aggression could well be the name of the game and **Gordon McQueen** will be commanding in defence, and up front the robust **Joe Jordan** will blow up the Arsenal. **Gordon Owen** not only forecasts Arsenal but confidently gives a 2-1 scoreline.

Inevitably the name of **Liam Brady**, P.F.A. Footballer of the Year, cropped up and in supporting the Gunners, **Mark Smith** believes Wembley the perfect setting to display his undoubted talents, and **Chris Turner** thinks that the Eire international and the twin power of **Sunderland** and **Stapleton** should win the game for the London side.

Dave Rushbury's vote went the way of Manchester United because they are the better all-round side, as did **Mike Pickering**, who says that despite Arsenal's Final appearance last year, the Old Trafford side had the more experience overall of big game atmosphere.

The old cry of 'lucky Arsenal' was not forgotten. **Dave Grant** and **Tony Toms** both firmly believe that the luck the Gunners enjoyed in the games against Sheffield Wednesday in the Third Round marathon and against Nottingham Forest will make the difference between the sides.

Arsenal have a weakness at full-back that Manchester United will exploit, declares **Bob Bolder** and although **Ian Porterfield**, for whom Wembley holds the most memorable moments in his career, agrees with that, he also believes that

the Gunners have enough flair, character and determination in their make-up to compensate for it.

Jimmy Mullen was concerned that the recent bad results Arsenal have been having could affect them and thinks United are the team in form at the moment and will lift the trophy, especially if **Jimmy Greenhoff** is fit. Greenhoff is also the player that **Hugh Dowd** suggests will prove the match-winner and **Denis Leman**, another to support Dave Sexton's side, contented himself with the comment that United would have altogether too much fire in their bellies.

Arsenal are rated a well organised, disciplined side who are very hard to break down, by coach **Ian St. John**, but despite all this the Scot still settles for United, whom he believes have the ability to win and will rise to the occasion as they did two years ago against Liverpool.

Ian Fleming felt sure Liverpool would achieve the double this year and following their semi-final knock-out by Manchester had to go for their victors.

Finally, a last word from **Rodger Wylde**, who supports Arsenal to win—but as everyone knows, with his ability as a tipster (witness his recent TV appearance), this probably means a red letter day for United.

Compiled by Derek Knight



A jubilant Maurice Setters raises his arms aloft after Manchester United's victory in the 1963 Cup Final.

DUCKER & LINDLEY

Building, Plumbing & Heating Contractors

VISIT OUR NEW BATHROOM SHOWROOMS

at

27 Derbyshire Lane, Sheffield 8.
Telephone: 53377

the name of the game is

WESTFIELD CONTRIBUTORY HEALTH SCHEME

Westfield — the local non-profit organisation with over 200,000 supporters — pays outstanding grants during hospitalisation (e.g. £7 per night), and grants towards the cost of spectacles, dental treatment, home helps, specialists' fees, etc., etc. Choose your contribution rate: 10p or 25p per week.

Apply now, or ask your employer (over 2,000 firms participate by deduction from pay).

Westfield House
87 Division Street
Sheffield S1 1HT
Telephone 29521

Jack Archer

Official Contractors to
SHEFFIELD WEDNESDAY

Special Discount to Schools and Clubs

Bramall Lane (Telephone 20593)

TEAMS

The Owls

- 1 BOB BOLDER ☐
- 2 PETER SHIRTLIFF ☐
- 3 DAVE GRANT ☐
- 4 JIMMY MULLEN ☐
- 5 MIKE PICKERING ☐
- 6 DAVE RUSHBURY ☐
- 7 GORDON OWEN ☐
- 8 IAN PORTERFIELD ☐
- 9 IAN FLEMING ☐
- 10 IAN NIMMO ☐
- 11 BRIAN HORNSBY ☐
- 12

The Robins

- 1 JIMMY ALLAN ☐
- 2 JOHN TROLLOPE ☐
- 3 ANDY FORD ☐
- 4 RAY McHALE ☐
- 5 ROY CARTER ☐
- 6 KENNY STROUD ☐
- 7 IAN MILLER ☐
- 8 BRYAN HAMILTON ☐
- 9 ANDY ROLAND ☐
- 10 ALAN MAYES ☐
- 11 PHIL BATES ☐
- 12



TODAY'S MATCH OFFICIALS

Referee: N. H. GLOVER (Chorley)

Red Flag: M. H. RICHARDSON (Notts.)

Orange Flag: D. WRAGG (Leics.)

The Club thank our match ball sponsor

DUCKER & LINDLEY

Your generosity is much appreciated